



Wenzhou Hengtong Printing&Packaging Machinery Co.,Ltd.

Web: www.hengtongmachinery.com

E-Mail: sales@hengtongchina.com

ZKT-750B Window Patching Machine

Latest



Appearance Design

The main body of the machine is protected by the iron box finishing with *claret painting, elegant and pleasing to the eye*. The small "door" closely stuck to the main electrical box and can be taken off easily for adjustment.

ADDRESS: Songqiao Industrial Zone, Pingyang County, Zhejiang, China

TEL: 0086-13325876220 FAX: 0086-577-63771198 Email: sales@hengtongchina.com

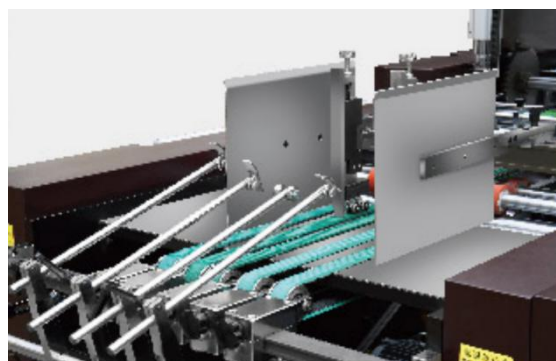
Main Features

ZKT-750B Window Patching Machine can apply window films to all kinds of paper boxes. Improved from our last generation machine, it is a fruit by referring to our customers' feedback, and philosophy of humanized design. It is easy to operate and excellent on efficiency, accuracy, and stability. This machine adopted servo motor control system. Our proprietary technology is embodied in both basic components and as well as the automatic system. Therefore ZKT-750B can highly meet our customers' demand.

Structural Characteristics

1. Paper Feeder

The paper feeder is driven by a Japanese Servo Motor Yaskawa. Paper is delivered on the intermittent belt. The paper feeder is controlled by PLC. With the *human-machine interface* (Both English and Chinese is supported), paper length can be input into the touchscreen. Both *carton paper* and *corrugated paper* can be done.



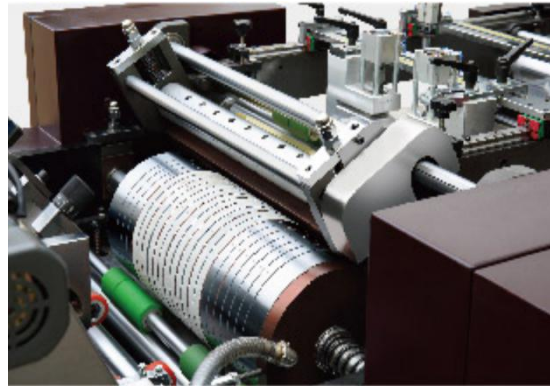
Human-machine interface

2. Film Feeding System

a. Easy to adjust the basic part of the film feeder left or right in parallel.

b. The Film feeder is controlled by the servo motor Yaskawa, make it more accurate. Film length can be input on the touchscreen, easy to adjust.

c. Automatic V-cut and creasing. Also apply to double line creasing, adjusted according to sample.

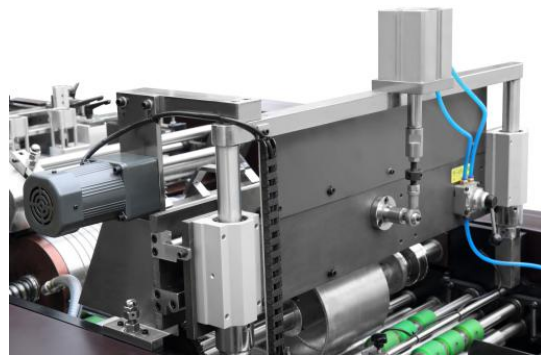


3. Gluing Part

a. The gluing part is consisted of a chromed sizing roller, gluing separating guide, side limiter and sizing template roller. It can be pulled out easily and clean.

b. The gluing separating guide can be adjusted to control the glue volume. **When paper runs out, the cylinder will raise the sizing roller and it will be driven by another independent motor to avoid solidification, also avoid glue touching the axis roller.**

c. The gluing roller adjusted freely on an axial or radial basis.



4. Paper Collect

The paper collector is designed as a belt and the final product can be stacked in order.



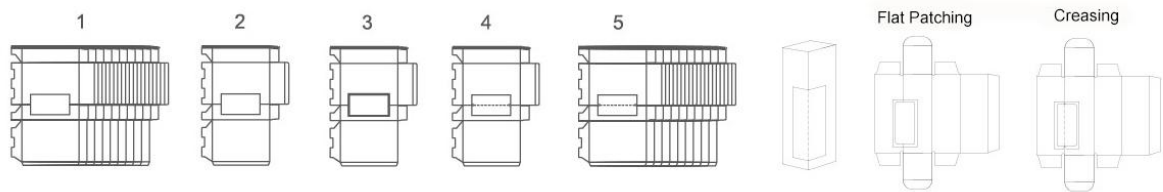
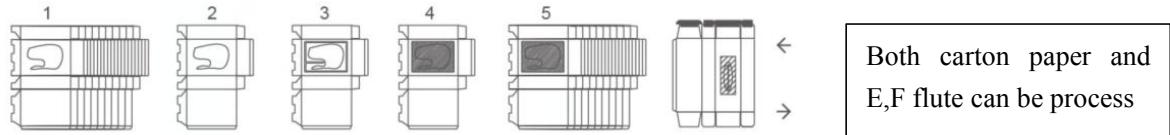
Main Technical Parameter

Model	ZKT-750B
Speed	6000-11000pcs/h (Flat patching) 4000-7000pcs/h (V-cut, creasing)
Paper Length	140-600mm (5 1/2 " -23 5/8 " inches)
Paper Width	120-750mm (4 3/4 " -29 1/2 " inches)
Film Length	60-400mm (2 3/8 " -15 3/4 " inches)
Film Width	30-400mm (1 3/16 " -15 3/4 " inches)
Main Power	2.2kw
Pump Power	1.5kw
External Dimension	5000X1550X1770mm
Weight	2800KG

ADDRESS: Songqiao Industrial Zone, Pingyang County, Zhejiang, China

TEL: 0086-13325876220 FAX: 0086-577-63771198 Email: sales@hengtongchina.com

Manufacture Process



ZKT-750B Configuration

Servo system : Yaskawa

Relay/Encoder: Omron

PLC/Photo Electric Sensor: Panasonic

Frequency Converter: Toshiba

Power Switch& Switch Button: Schneider

Breaker/ Contactor : Schneider

Solenoid Valve: SMC

Main Bearing : NSK

ADDRESS: Songqiao Industrial Zone, Pingyang County, Zhejiang, China

TEL: 0086-13325876220 FAX: 0086-577-63771198 Email: sales@hengtongchina.com

Sample



CE Certificate

CELAB®
Via Maire snc
04100 Latina
Italy
celab@celab.com

CERTIFICATE

Certificate Number UCN : 8011778827
Job : J16420
Date of Issue : 2019-06-12
Certificate valid up to : 2019-06-11

Brand Name : /
Type : Window Patching Machine
Model N : ZKT, ZKT-A, ZKT-B, ZF

Manufacturer : WENZHOU HENG TONG PRINTING & PACKAGING MACHINERY CO., LTD.
Address : Sunbo Industrial Zone, Wanyuan Town, Pingyang County, Wenzhou, Zhejiang, China

Standard Used : EN 60204-1:2006+A1:2009+AC:2010, EN ISO 12100:2010

Conclusion :
After inspection of the technical documentation issued by the customer and in his request, we express our opinion that the product meets the technical requirement of the following directives and standards:
2006/95/EC Low Voltage (LVD) 2006/42/EC Machinery (MD)

This opinion is only valid for the directive, the equipment and configuration described, in conjunction with the test data detailed above and with compliance with all applicable legal requirement for the product.
The following manufacturer documents were inspected:

Presence of Declaration of conformity template	✓ OK
Presence of test report using standards as indicated in the declaration of conformity	✓ OK
Presence of CE symbol in the product label	✓ OK
Presence of instruction manual	✓ OK
Use of valid Harmonized standard in the declaration of conformity	✓ OK
Presence of product description in the technical construction file	✓ OK

Copyright of this Certificate is owned by CELAB® Italy and may not be reproduced other than in full and with the prior approval of the General Manager. Use of this certificate is subjected to Celab regulation available on Celab web site.
Check the authenticity of this certificate and related information before use in the web site www.celab.com introducing the UCN number in the 'Check document authenticity' area. You will see copy of this certificate and regulation on certificate use. This document is released only for scope allowed by laws. Do not use this document without full understanding of regulation.

Massimiliano Bertoldi
General Manager - CELAB
www.celab.com

www.celab.com

Doc 121 Voluntary Certificate rev 3.3

CELAB®
Via Maire snc
04100 Latina
Italy
celab@celab.com

CERTIFICATE

Certificate Number UCN : 8011778827
Job : J16420
Date of Issue : 2019-06-12
Certificate valid up to : 2019-06-11

Brand Name : /
Type : Window Patching Machine
Model N : ZKT, ZKT-A, ZKT-B, ZF

Manufacturer : WENZHOU HENG TONG PRINTING & PACKAGING MACHINERY CO., LTD.
Address : Sunbo Industrial Zone, Wanyuan Town, Pingyang County, Wenzhou, Zhejiang, China

Standard Used : EN 60204-1:2006+A1:2009+AC:2010, EN ISO 12100:2010

Conclusion :
After inspection of the technical documentation issued by the customer and in his request, we express our opinion that the product meets the technical requirement of the following directives and standards:
2006/95/EC Low Voltage (LVD) 2006/42/EC Machinery (MD)

This opinion is only valid for the directive, the equipment and configuration described, in conjunction with the test data detailed above and with compliance with all applicable legal requirement for the product.
The following manufacturer documents were inspected:

Presence of Declaration of conformity template	✓ OK
Presence of test report using standards as indicated in the declaration of conformity	✓ OK
Presence of CE symbol in the product label	✓ OK
Presence of instruction manual	✓ OK
Use of valid Harmonized standard in the declaration of conformity	✓ OK
Presence of product description in the technical construction file	✓ OK

Copyright of this Certificate is owned by CELAB® Italy and may not be reproduced other than in full and with the prior approval of the General Manager. Use of this certificate is subjected to Celab regulation available on Celab web site.
Check the authenticity of this certificate and related information before use in the web site www.celab.com introducing the UCN number in the 'Check document authenticity' area. You will see copy of this certificate and regulation on certificate use. This document is released only for scope allowed by laws. Do not use this document without full understanding of regulation.

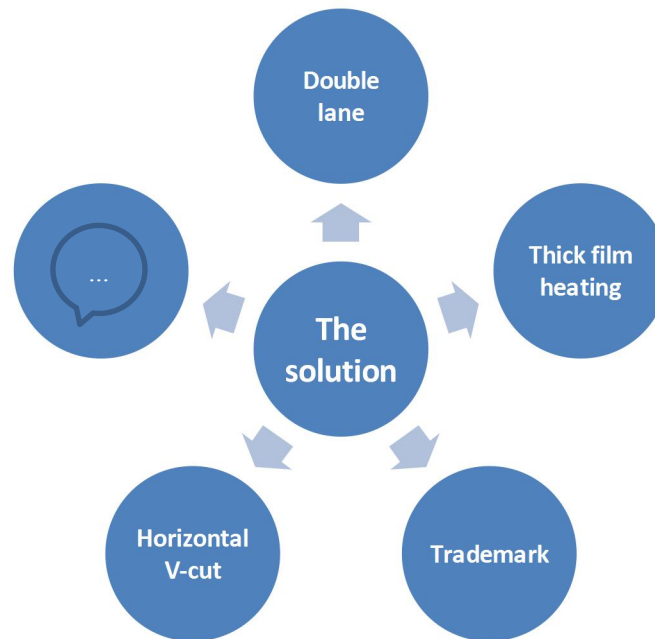
Massimiliano Bertoldi
General Manager - CELAB
www.celab.com

Doc 121 Voluntary Certificate rev 3.3

ADDRESS: Songqiao Industrial Zone, Pingyang County, Zhejiang, China

TEL: 0086-13325876220 FAX: 0086-577-63771198 Email: sales@hengtongchina.com

Optional Service



ATTENTION

- 1.Warranty: ONE year with LIFETIME maintenance, except except the EASY BROKEN SPARE parts and MAN-MADE MISOPERATION,
- 2.Installation:
 - a. we can send our engineer to your country, and you should pay all the cost including VISA, FLIGHT FEE,HOTEL AND FOOD COST ,SALRAY \$50/DAY.
 - b.you can send your engineer to your factory to learn the adjustment,still you should pay all the cost.
- 3.PAYMENT: 30%PAID BY T/T AS DOWNPAYMENT, 70% BALANCE PAID BY T/T PRIOR TO SHIPPING.
- 4.SHIPPING DATE: WITHIN 20 DAYS AFTER RECEIPT DOWNPAYMENT
- 5.PACKING TYPE: WOODEN BOX

ADDRESS: Songqiao Industrial Zone, Pingyang County, Zhejiang,China

TEL: 0086-13325876220 FAX: 0086-577-63771198 Email: sales@hengtongchina.com